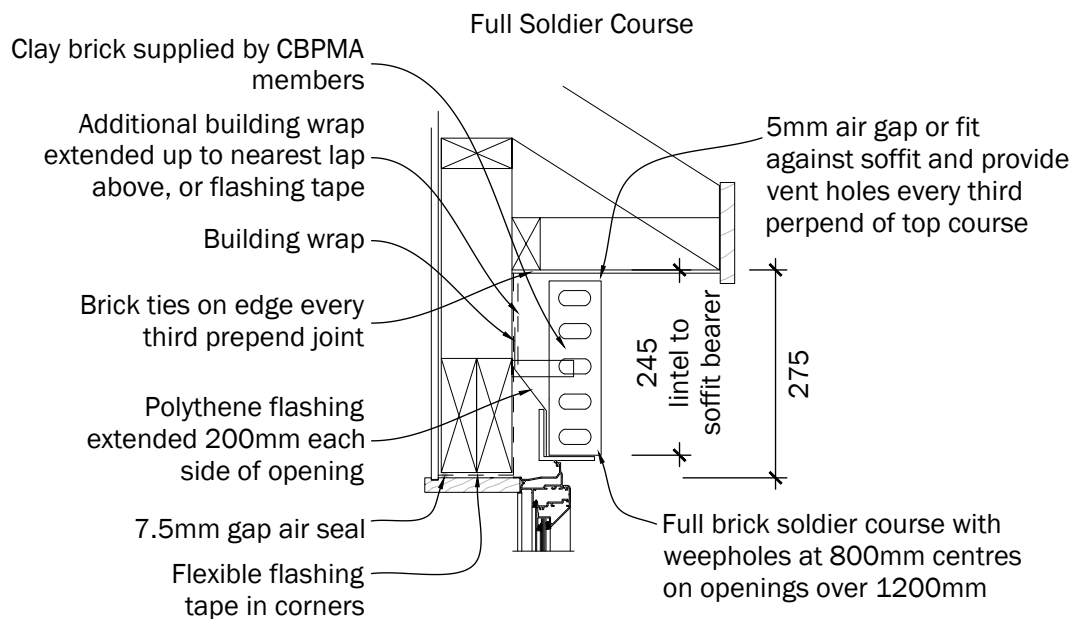




OH03: Window Head - Full Soldier Course

Openings – Head



Note:

- a. For openings greater than 2.0m, provide a landing for the lintel of 200mm for each side of the opening.
- b. For openings less than 2.0m allow 100mm each side of opening.

Important:

- a. All lintel bars must be propped until mortar is set (7 days).
- b. It is important to allow the first 3 courses of the brickwork over an opening to set before laying any more bricks above.
- c. Provide brick ties within the bottom two courses.